

RFJ080-1-25

RF Driver / Amplifier



2822

The RFJ080-1-25 is a combined 80 MHz oscillator and power amplifier suitable for driving Isomet acousto-optic modulators requiring high peak powers for duty cycled operation. This driver features both digital gate and analog modulation inputs for the control of the RF amplitude. Protection includes an internal over temperature sensor, and a 'Tranzorb' over voltage diode on the DC supply input. An external interlock (or RF enable) input is provided.

The driver will operate from a +24V to +28Vdc supply. LED's indicate the status of the thermal interlocks, DC supply and the RF power activity. The RF output power limit is adjusted by means of a pre-set potentiometer.

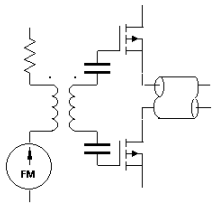
The amplifier is conduction cooled through the base and must be mounted to heat conducting surface.

SPECIFICATION

Power Output	:	28 Watts Max CW (28V supply) 25 Watts Max. CW (24V supply)	
Load Impedance	:	50Ω	
Harmonic Distortion	:	>20dB below fundamental	
Mismatch Tolerance	:	Driver will not oscillate	
Centre Frequency	:	80.0 MHz	
Frequency stability	:	± 25ppm	
Frequency accuracy	:	± 25ppm	
Modulation Control Voltage			
	Digital	:	TTL compatible (> 2.7V, RF active) SMA connector, 5V maximum
	Analog	:	0.0 to 10.0V, 3Kohm i/p impedance (nominal) SMA connector, 12V maximum
RF ON to OFF Ratio	:	40dB below full power	
Output Switching Speed	:	< 50/30 ns Rise/Fall, 0 to 20 Watts	
Interlock	:	Open OFF, closed ON : (Sink 20mA at Vdc) Binder 3-way connector, pin1 – pin2	
Temperature Range	:	0° to 50°C, Thermal Shutdown Interlock	
DC Power Input	:	Filtered screw terminals	
Power Supply, Vdc	:	+24V to +28Vdc, 1.0% regulation, < 4A	

ALL SPECIFICATIONS SUBJECT TO CHANGE WITHOUT NOTICE
 ISOMET CORP, 10342 Battlevue Parkway, Manassas, VA 20109, USA.
 Tel: (703) 321 8301 Fax: (703) 321 8546
 E-mail: ISOMET@ISOMET.COM Web Page: WWW.ISOMET.COM

Quality Assured.
In-house: RF & Digital design
Software Development
OEM manufacture



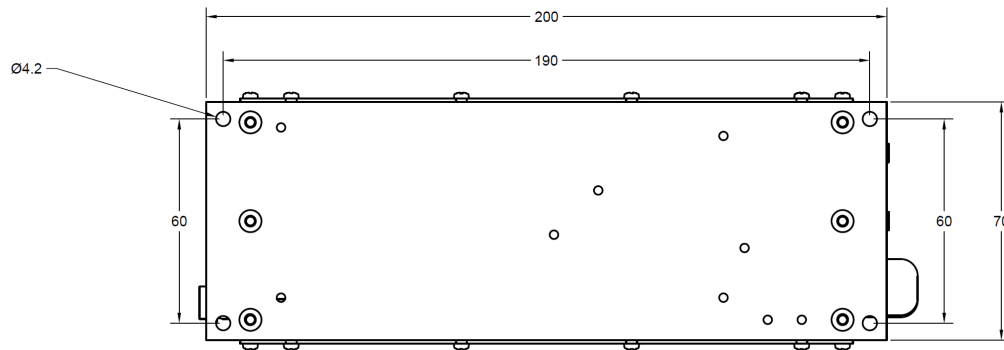
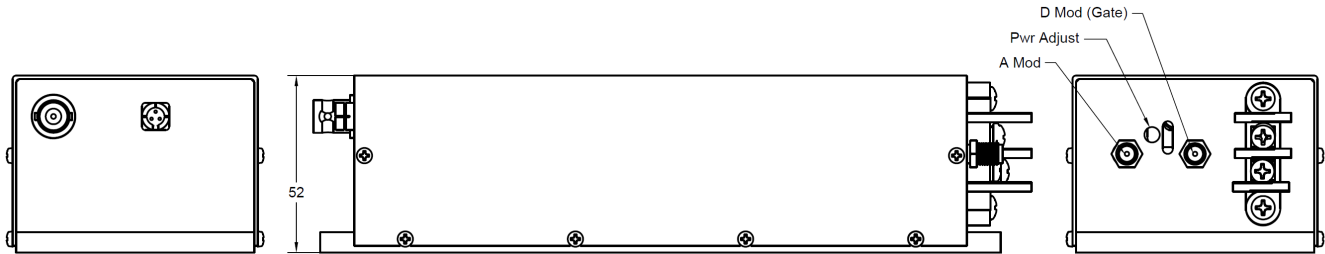
RFJ080-1-25

RF Driver / Amplifier



2822

OUTLINE DRAWING



OPTIONS

- A : Analog modulation only
- D : Digital modulation only
- V : 0 - 5V analog modulation range

ALL SPECIFICATIONS SUBJECT TO CHANGE WITHOUT NOTICE
 ISOMET CORP, 10342 Battleview Parkway, Manassas, VA 20109, USA.
 Tel: (703) 321 8301 Fax: (703) 321 8546
 E-mail: ISOMET@ISOMET.COM Web Page: WWW.ISOMET.COM

Quality Assured.
In-house: RF & Digital design
Software Development
OEM manufacture